

### DESCRIPTION

The BIN is a highly reliable averaging pitot tube which generates a pressure differential between its upstream (stagnation) ports and its downstream (static) ports that is proportional to the flow rate squared. It can be used to measure liquid or air in pipe sizes 2...24 in. An opposite support is supplied standard on pipe sizes 8 in. and larger.

### FEATURES

- Accuracy  $\pm 3\%$
- Easy low-cost installation - ideal for retrofits
- Very low pressure drop
- Bi-directional flow measurement capability

### SPECIFICATIONS

Name	Specification
Probe Construction	316 Stainless steel
Head	"Y" type, brass 1/8 in. FNPT
Pipe Mounting	3000# CS thread-o-let
Instrument Valves	1/4 in. SAE flare brass ball type
ID Tag	Polycarbonate
Temperature Maximum *	250° F (120° C)
Pressure Maximum *	400 PSIG (2760 kPa)

\* For higher pressure and temperature application please consult factory



## MODEL SELECTOR

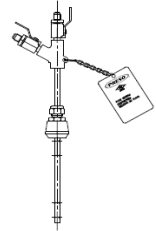
## Preso Meter Commercial Products

## ANNULAR ROUND PITOT TUBE

## BIN Annular Regular

PBIN

--	--	--	--	--

**PIPE SIZE**

2"  
2-1/2"  
3"  
3-1/2"  
4"  
5"  
6"  
8"  
10"  
12"  
14"  
16"  
18"  
20"  
24"

A  
B  
C  
D  
E  
F  
G  
H  
I  
J  
K  
L  
M  
N  
O

**SCHEDULE**

STD  
40  
80  
Type L (Copper)  
Type K (Copper)  
Other

A  
B  
C  
D  
E  
X

**PIPE MOUNTING HARDWARE**

Carbon Steel  
Copper  
PVC  
Not Required

1  
2  
3  
Z

**INSTRUMENT CONNECTION**

Brass Ball Valve 1/4" SAE  
Brass Ball Valve w/Quick Connect

A  
B

**TAG\***

Polycarbonate  
Stainless Steel

1  
2

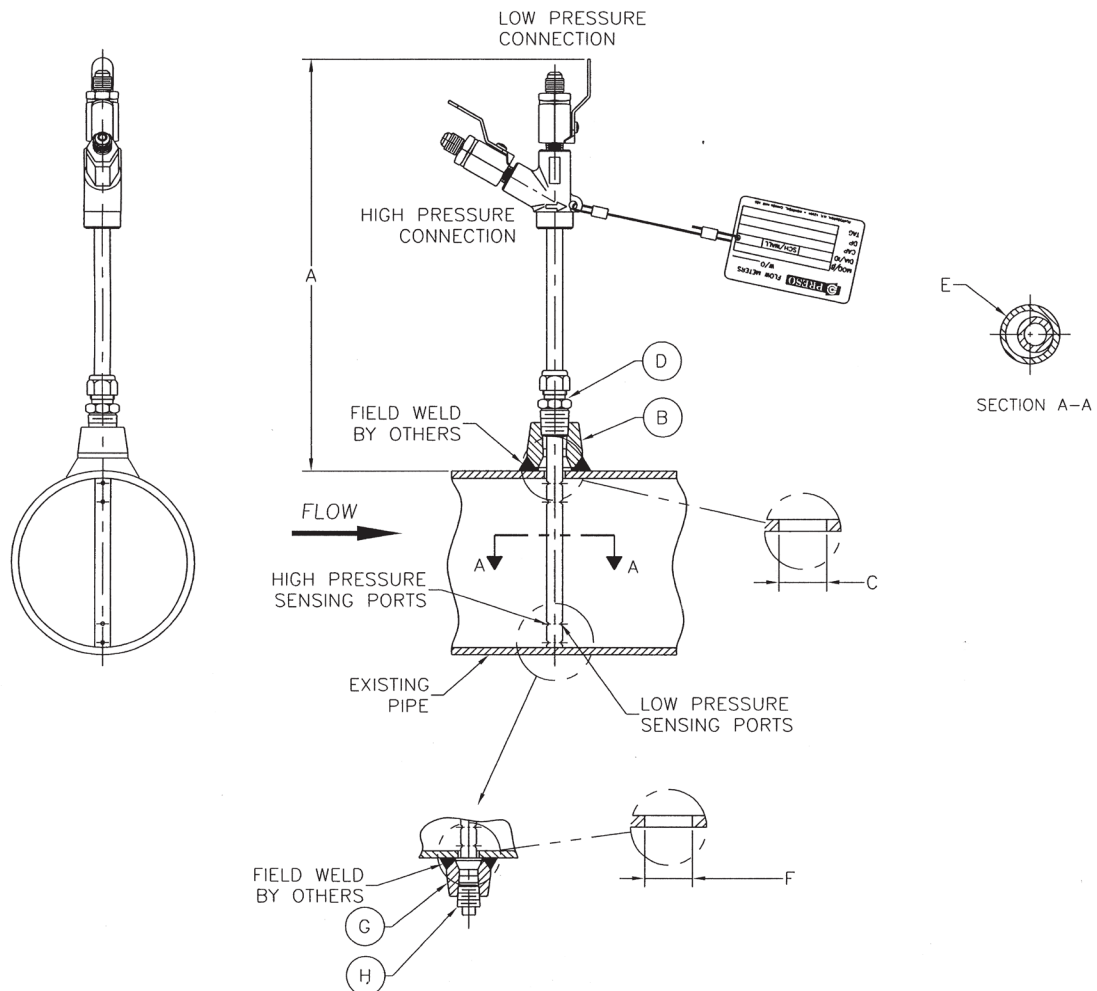
\*Tag information must be included with order.

**NOTE:**

All 8" and larger sizes are supplied with double support hardware as standard.

# SUBMITTAL DATA

Size	Model	A Height in. (mm)	B NPT in. (mm)	C DIM in. (mm)	D OD in. (mm)	E NPT in. (mm)	F NPT in. (mm)	App. Weight lbs (kg)
2 in.	PBINAXXX	8.25 (209.55)	0.25 (6.35)	0.625 (15.80)	0.3125 (7.90)	—	—	1 (0.45)
2-1/2 in.	PBINBXXX	8.25 (209.55)	0.25 (6.35)	0.625 (15.80)	0.3125 (7.90)	—	—	1 (0.45)
3 in.	PBINCXXX	8 (203.20)	0.25 (6.35)	0.625 (15.80)	0.3125 (7.90)	—	—	1 (0.45)
3-1/2 in.	PBINDXXX	8.25 (209.55)	0.25 (6.35)	0.625 (15.80)	0.3125 (7.90)	—	—	1 (0.45)
4 in.	PBINEXXX	8.25 (209.55)	0.25 (6.35)	0.625 (15.80)	0.3125 (7.90)	—	—	1 (0.45)
5 in.	PBINFXXX	8.75 (222.25)	0.375 (9.50)	0.625 (15.80)	0.375 (9.50)	—	—	1.25 (0.57)
6 in.	PBINGXXX	8.75 (222.25)	0.375 (9.50)	1.125 (28.50)	0.375 (9.50)	—	—	1.25 (0.57)
8 in.	PBINHXXX	8.38 (212.90)	0.375 (9.50)	1.125 (28.50)	0.375 (9.50)	0.25 (6.35)	0.25 (6.35)	1.5 (0.68)
10 in.	PBINIXXX	8.38 (212.90)	0.375 (9.50)	1.125 (28.50)	0.375 (9.50)	0.25 (6.35)	0.25 (6.35)	1.5 (0.68)
12 in.	PBINJXXX	9.38 (238.30)	0.5 (12.70)	1.125 (28.50)	0.5 (12.70)	0.375 (9.50)	0.375 (9.50)	2 (0.91)
14 in.	PBINKXXX	10.25 (260.35)	1 (25.40)	1.375 (34.90)	1 (25.40)	1 (25.40)	1 (25.40)	4.25 (1.93)
16 in.	PBINLXXX	10.38 (263.65)	1 (25.40)	1.375 (34.90)	1 (25.40)	1 (25.40)	1 (25.40)	4.25 (1.93)
18 in.	PBINMXXX	10.38 (263.65)	1 (25.40)	1.375 (34.90)	1 (25.40)	1 (25.40)	1 (25.40)	4.5 (2.05)
20 in.	PBINNXXX	10.25 (260.35)	1 (25.40)	1.375 (34.90)	1 (25.40)	1 (25.40)	1 (25.40)	4.5 (2.05)
24 in.	PBINOXXX	10.25 (260.35)	1 (25.40)	1.375 (34.90)	1 (25.40)	1 (25.40)	1 (25.40)	4.5 (2.05)



**Control. Manage. Optimize.**

Preso and Ellipse are registered trademarks of Badger Meter, Inc. Other trademarks appearing in this document are the property of their respective entities. Due to continuous research, product improvements and enhancements, Badger Meter reserves the right to change product or system specifications without notice, except to the extent an outstanding contractual obligation exists. © 2021 Badger Meter, Inc. All rights reserved.

**[www.badgermeter.com](http://www.badgermeter.com)**